

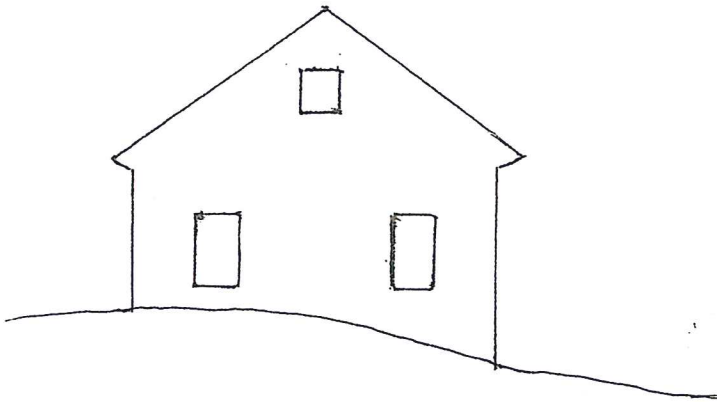
"OUT TO DRY"

PAINTING WITH WILSON BICKFORD (Series 300)

www.wilsonbickford.com

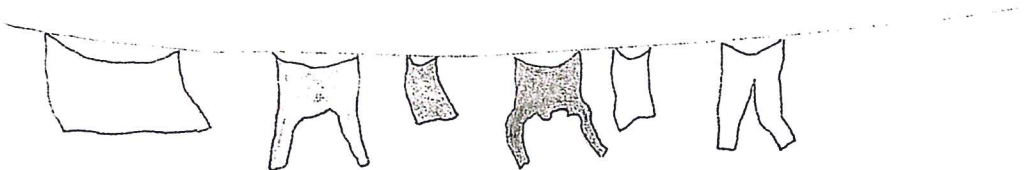
For Class / workshop info,
as well as DVD's and Painting Packets,
visit www.wilsonbickford.com

For WB Signature Oil Painting Products,
visit www.jerrysartarama.com



Think of what **COULD** be on a typical clothesline. Sheets, shirts, socks, pants, dresses, etc. Just capturing the basic shape will be enough to suggest the items. Vary the colors to make it more interesting. Think "BRIGHT", but also Light and Dark. Pay attention to the "scale" (size of the garments), as well. Smaller will look better than **TOO BIG!**

"OUT TO DRY"



**** This clothesline is not to scale, but for reference only.**